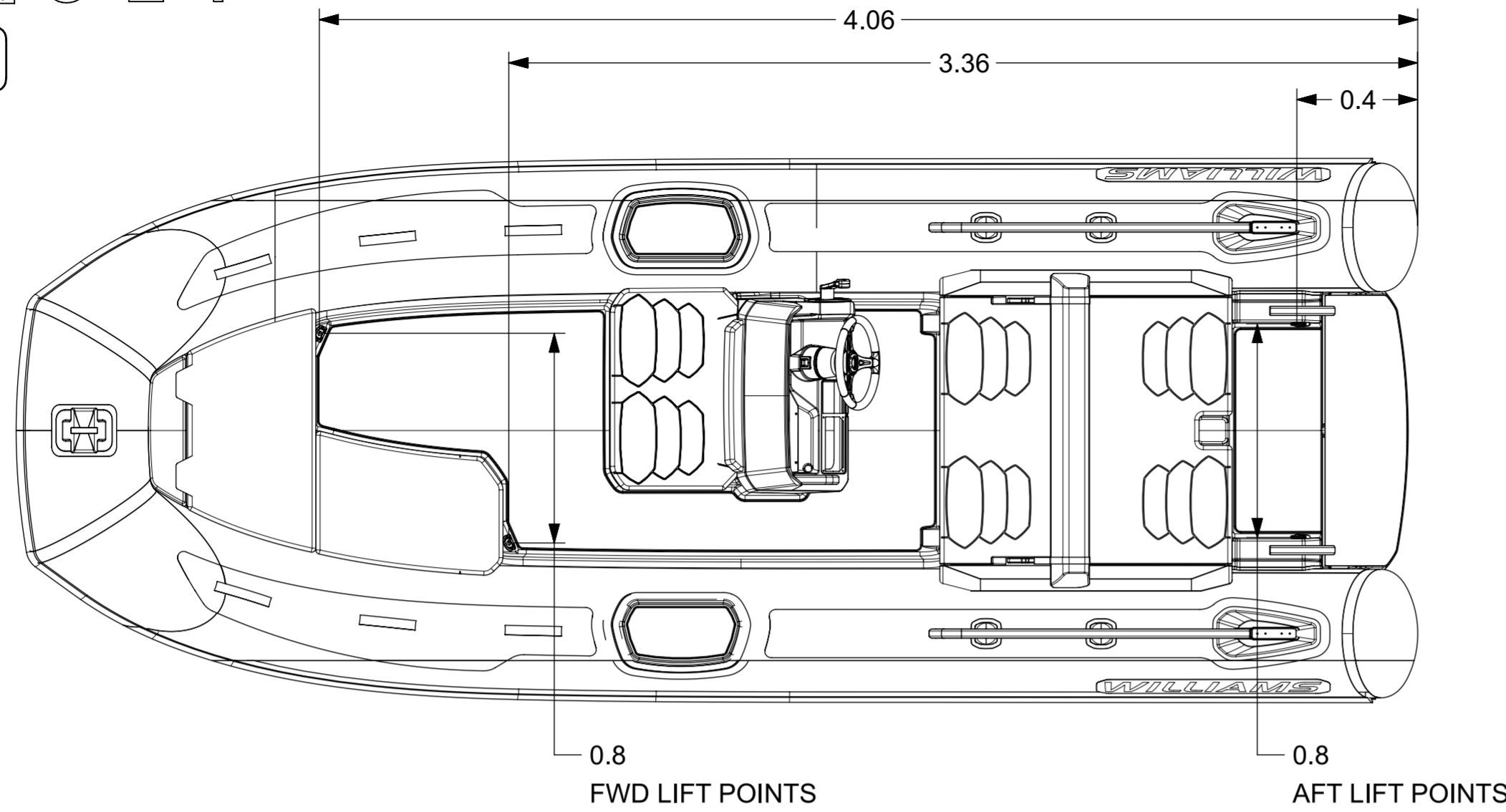


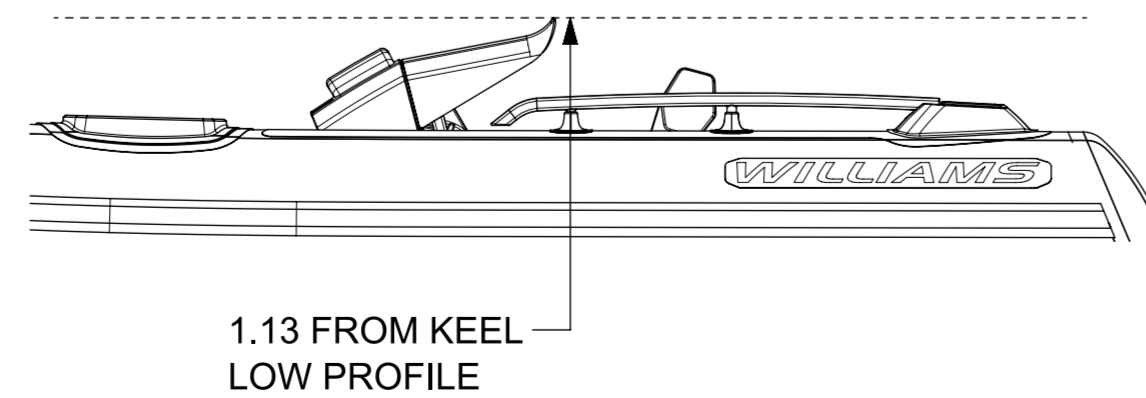
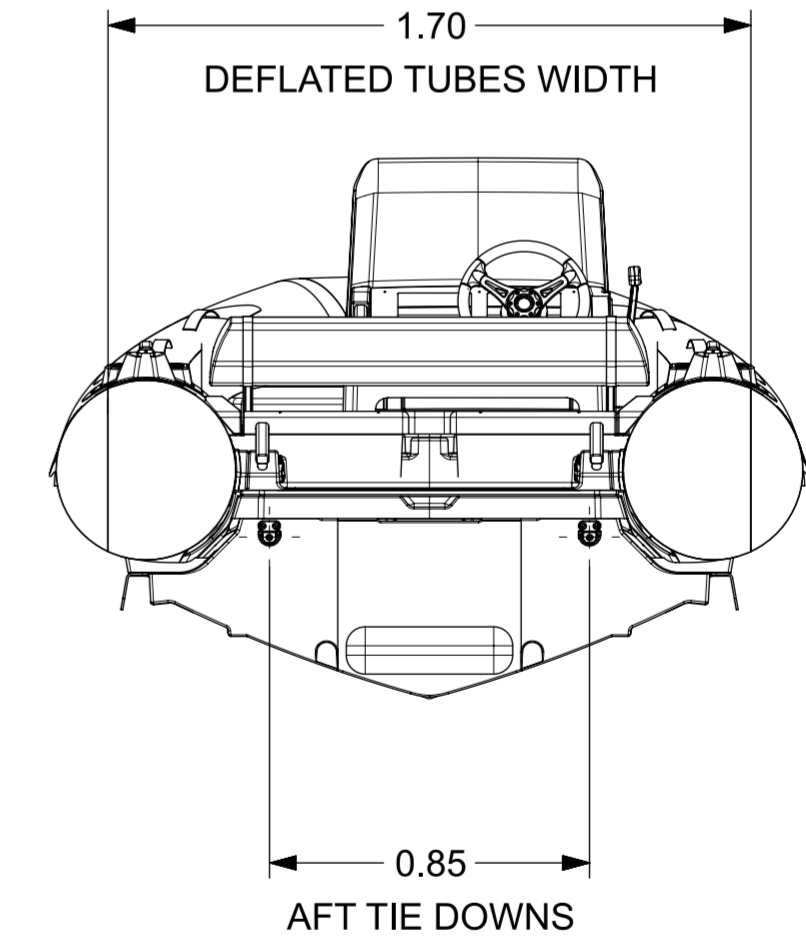
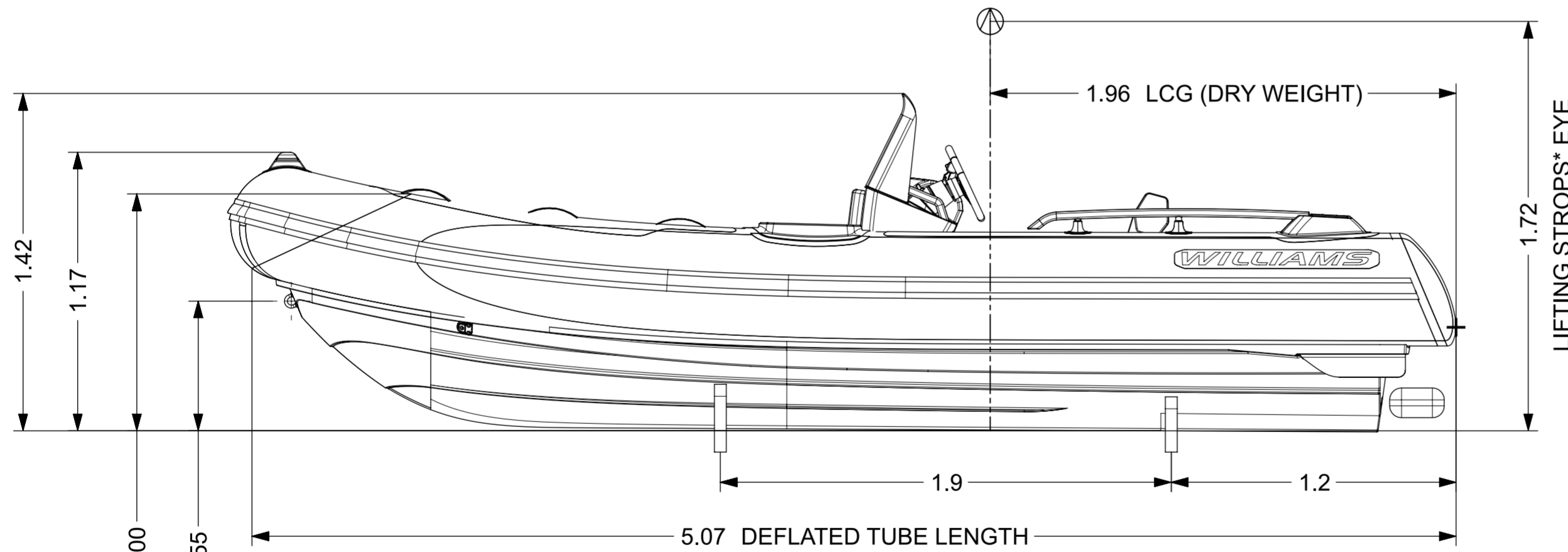
SPORTJET 520



LENGTH	5.19m (±1%)
BEAM	2.01m (±1%)
DRAFT (FULLY LOADED)	0.40m
ENGINE	Rotax 1630 ACE iDF
POWER	230hp ≅ 172kW
DRY WEIGHT	670kg
SEATING CAPACITY	7
FUEL	PETROL
FUEL CAPACITY	100L
MAX. SPEED	56mph ≅ 90kph
No. TUBE COMPARTMENTS	5
CE DESIGN CATEGORY	C

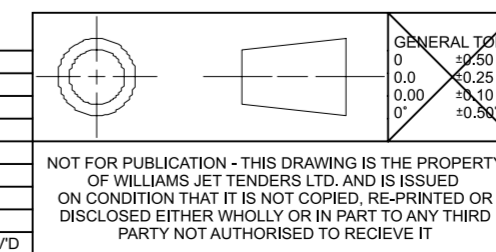
NOTES:

1. LENGTH / BEAM TOLERANCE DUE TO VARIATION IN TUBE AIR PRESSURE.
2. AVERAGE DRY WEIGHT STATED;
ACTUAL WEIGHT DEPENDENT ON OPTIONS FITTED.
3. LOW PROFILE:
 - DEFLATED TUBES (AUTO BOW TUBE INFLATOR REQUIRED*).
 - QUICK RELEASE STEERING WHEEL.
 - FOLDABLE HELM.
4. REFER TO DWG RD2197 FOR CHOCK PROFILES.
5. ALL DIMENSIONS IN METERS.



*OPTIONAL ACCESSORY

REV.	DATE	DETAILS	FZ	OB
1	13/05/2024	FIRST ISSUE	FZ	OB
			DRAWN	APPVD



NAME	DATE
DRAWN FZ	13/05/2024
APPVD OBB	13/05/2024
PROJECT: P96E	
INSPECTION LEVEL:	
MATERIAL & FINISH	

WILLIAMS

TITLE: **SPORTJET 520 (2025MY)**

PART NO.: WPT-000520SJ-P96-2025MY-DATASHEET_dwg1

SCALE 1:20

SHEET 1 OF 1

NOT FOR PUBLICATION - THIS DRAWING IS THE PROPERTY OF WILLIAMS JET TENDERS LTD. AND IS ISSUED ON CONDITION THAT IT IS NOT COPIED, RE-PRINTED OR DISCLOSED EITHER WHOLLY OR IN PART TO ANY THIRD PARTY NOT AUTHORISED TO RECEIVE IT

REMOVE ALL BURRS & BREAK SHARP EDGES
 GENERAL SURFACE FINISH Ra 1.6UM
 DIMENSIONS IN MM UNLESS STATED
 DO NOT SCALE DRAWING