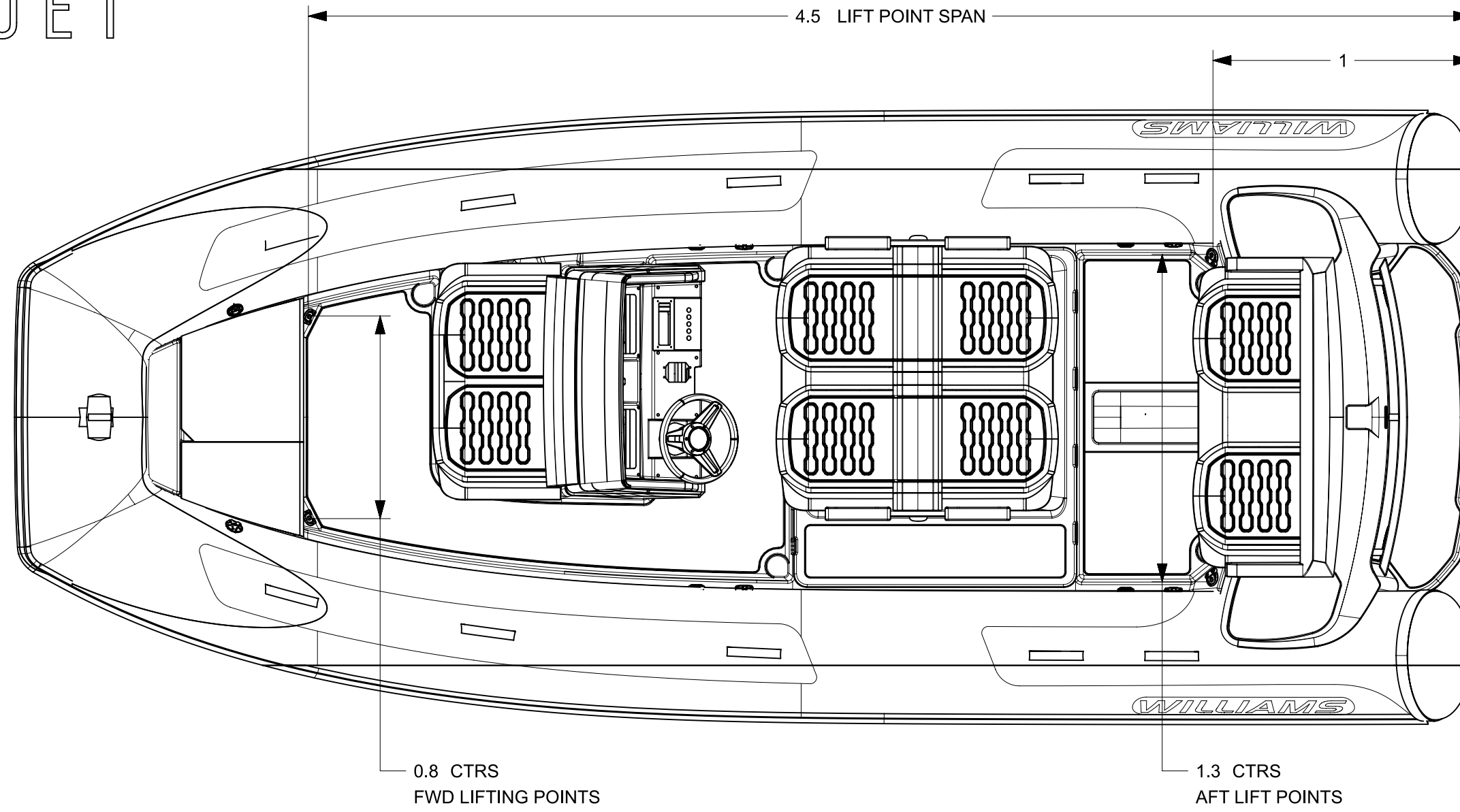


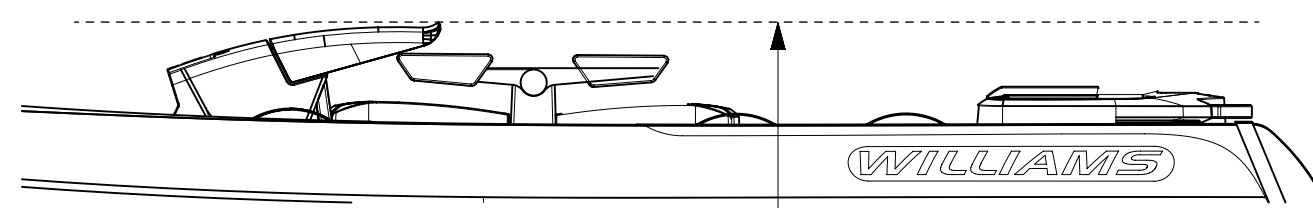
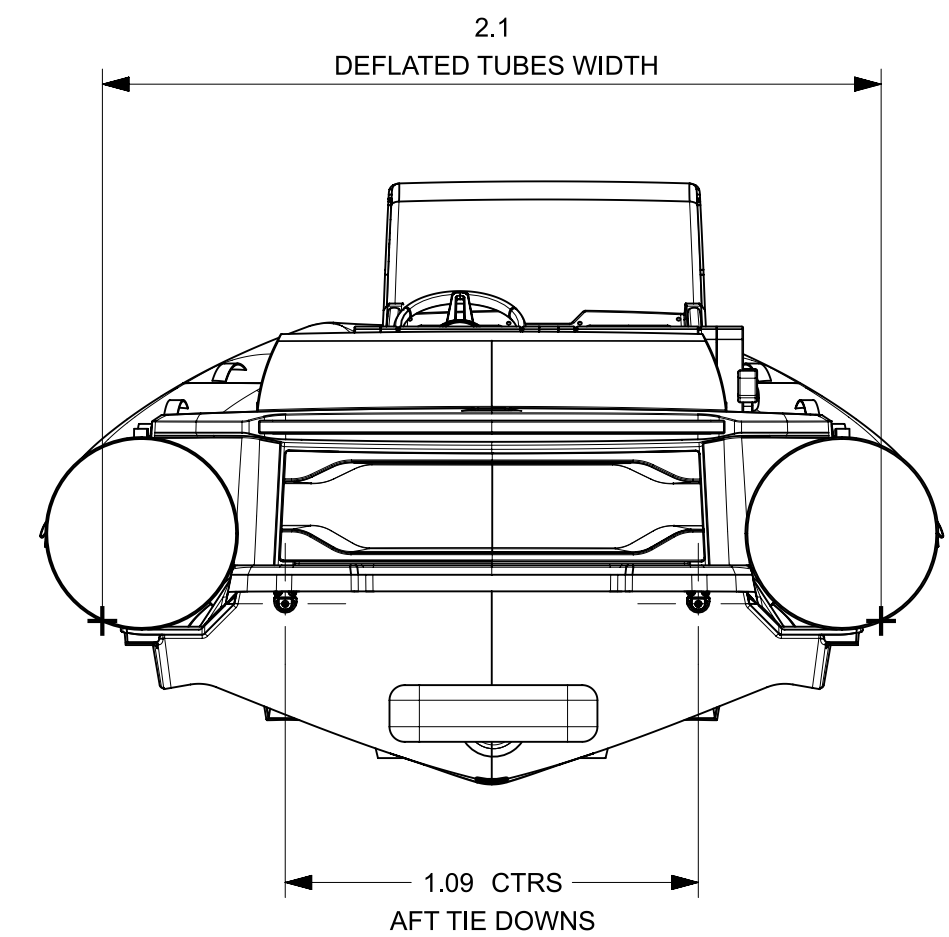
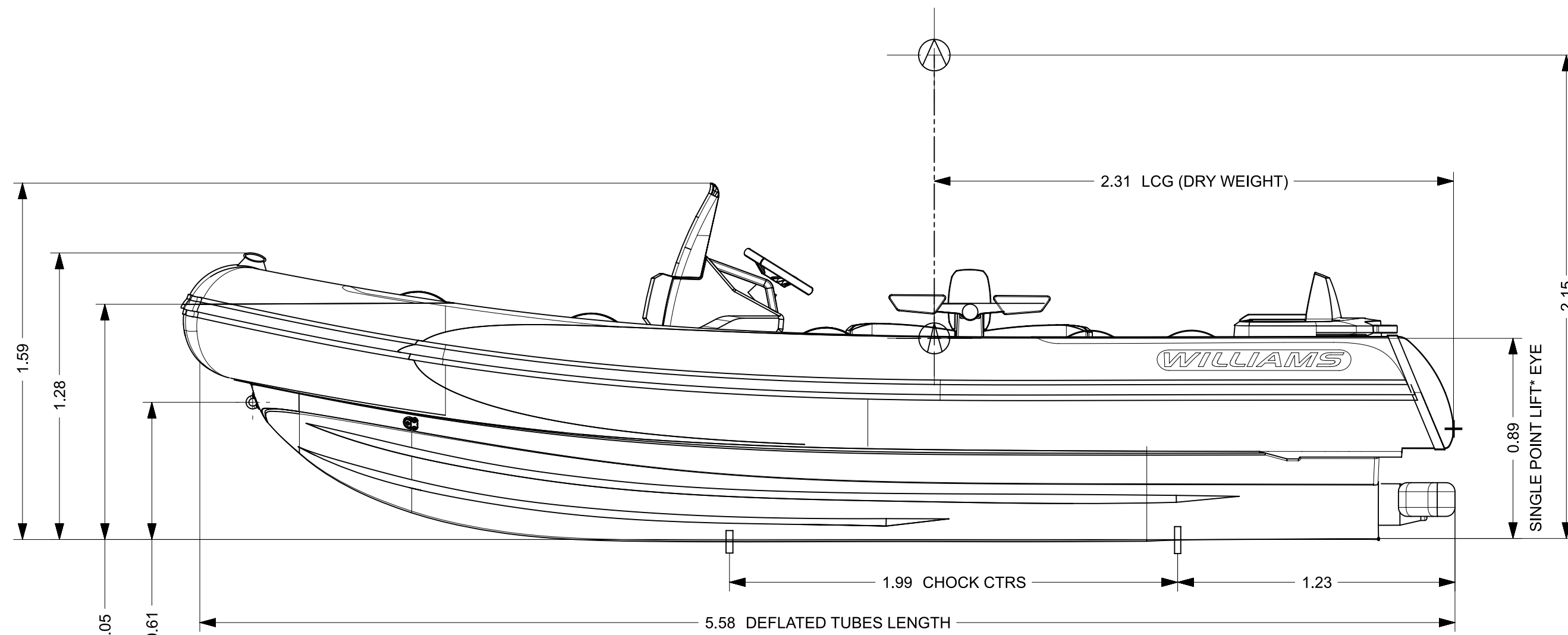
DIESELJET 565



LENGTH	5.71m (±1%)
BEAM	2.41m (±1%)
DRAFT (FULLY LOADED)	0.50m
ENGINE	YANMAR 4LV
POWER	150hp ≅ 111kW / 195hp ≅ 143kW
DRY WEIGHT	1227Kg
SEATING CAPACITY	9
FUEL	DIESEL
FUEL CAPACITY	140L
MAX. SPEED	40mph ≅ 64kph / 44mph ≅ 71kph
No. TUBE COMPARTMENTS	6
CE DESIGN CATEGORY	C

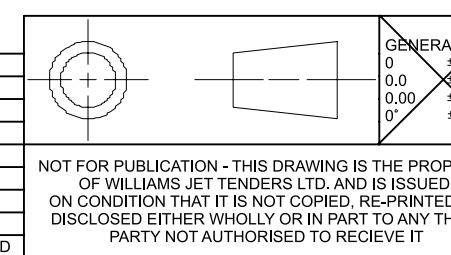
NOTES:

- LENGTH / BEAM TOLERANCE DUE TO VARIATION IN TUBE AIR PRESSURE.
- AVERAGE DRY WEIGHT STATED; ACTUAL WEIGHT DEPENDENT ON OPTIONS FITTED.
- GARAGE STOWAGE CONFIGURATION:
 - QUICK RELEASE STEERING WHEEL
 - FOLDABLE HELM
 - BOW TUBE DEFLATED
- LOW PROFILE OPTION:
 - LP ENGINE LOWER
 - REMOVABLE BACKREST & ARMREST
- REFER TO DWG RD444 FOR CHOCK PROFILES.
- SINGLE POINT LIFT OPTION*: 99-0999
- ALL DIMENSIONS IN METERS.



OPTIONAL ACCESSORY*

REV.	DATE	DETAILS	FZ	AM	DRAWN	APPVD
1	15/10/2024	DOCUMENT PRODUCTION				



GENERAL TOL.	0.00	0.25	0.40	0.50
REMOVE ALL BURRS & BREAK SHARP EDGES				
GENERAL SURF FINISH	Ra 1.6UM UNLESS STATED			
DO NOT SCALE DRAWING				

DRAWN	FZ	15/10/2024	WILLIAMS
APPVD	AM	15/10/2024	
PROJECT:			TITLE
INSPECTION LEVEL:			DIESELJET 565 (2025MY)
MATERIAL & FINISH			PART NO.
			WPT-000565DJ-P99-2025MY-DATASHEET_dwg1
SCALE 1:20			A2
SHEET 1 OF 1			