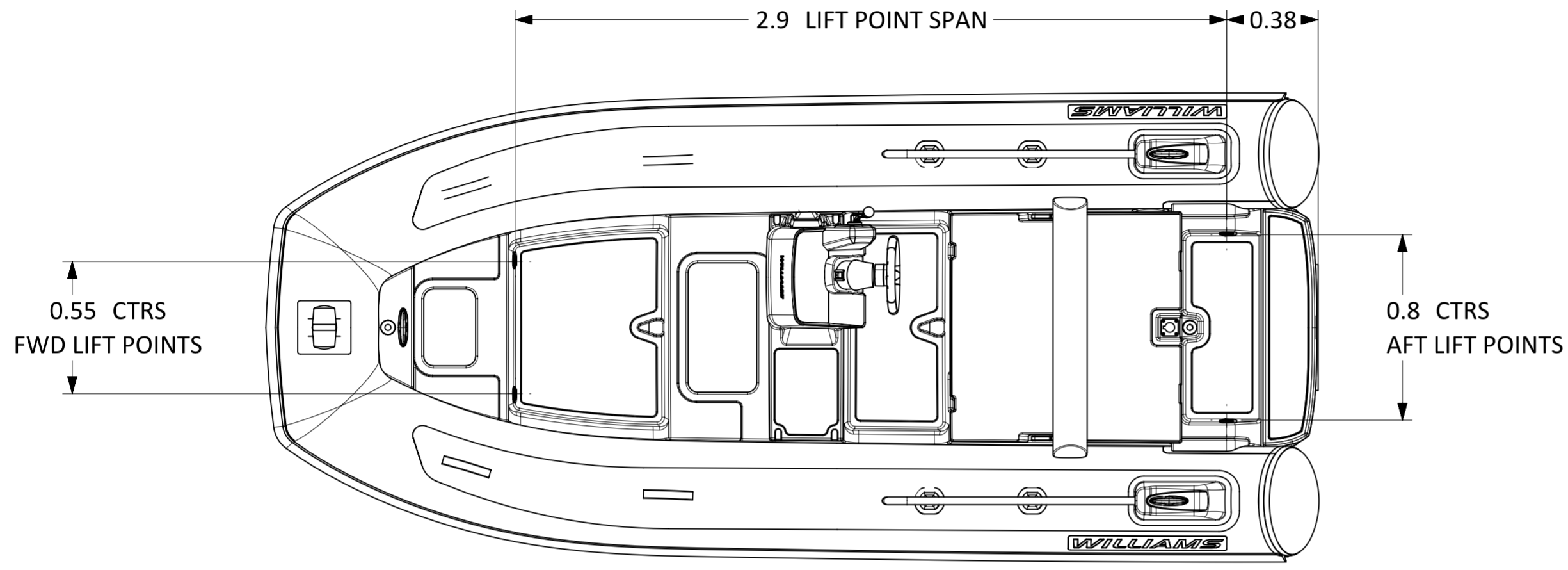


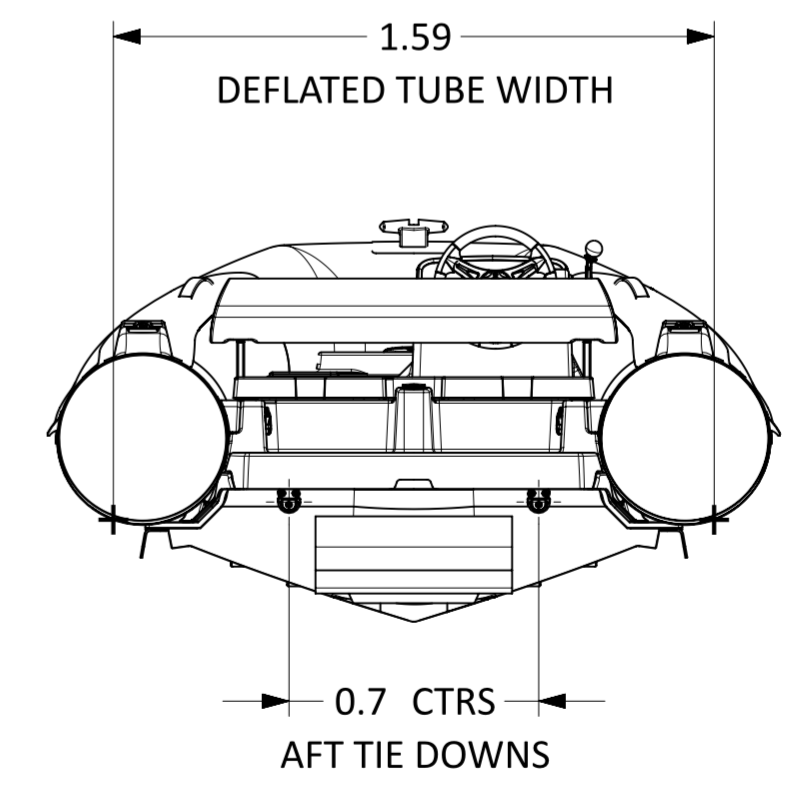
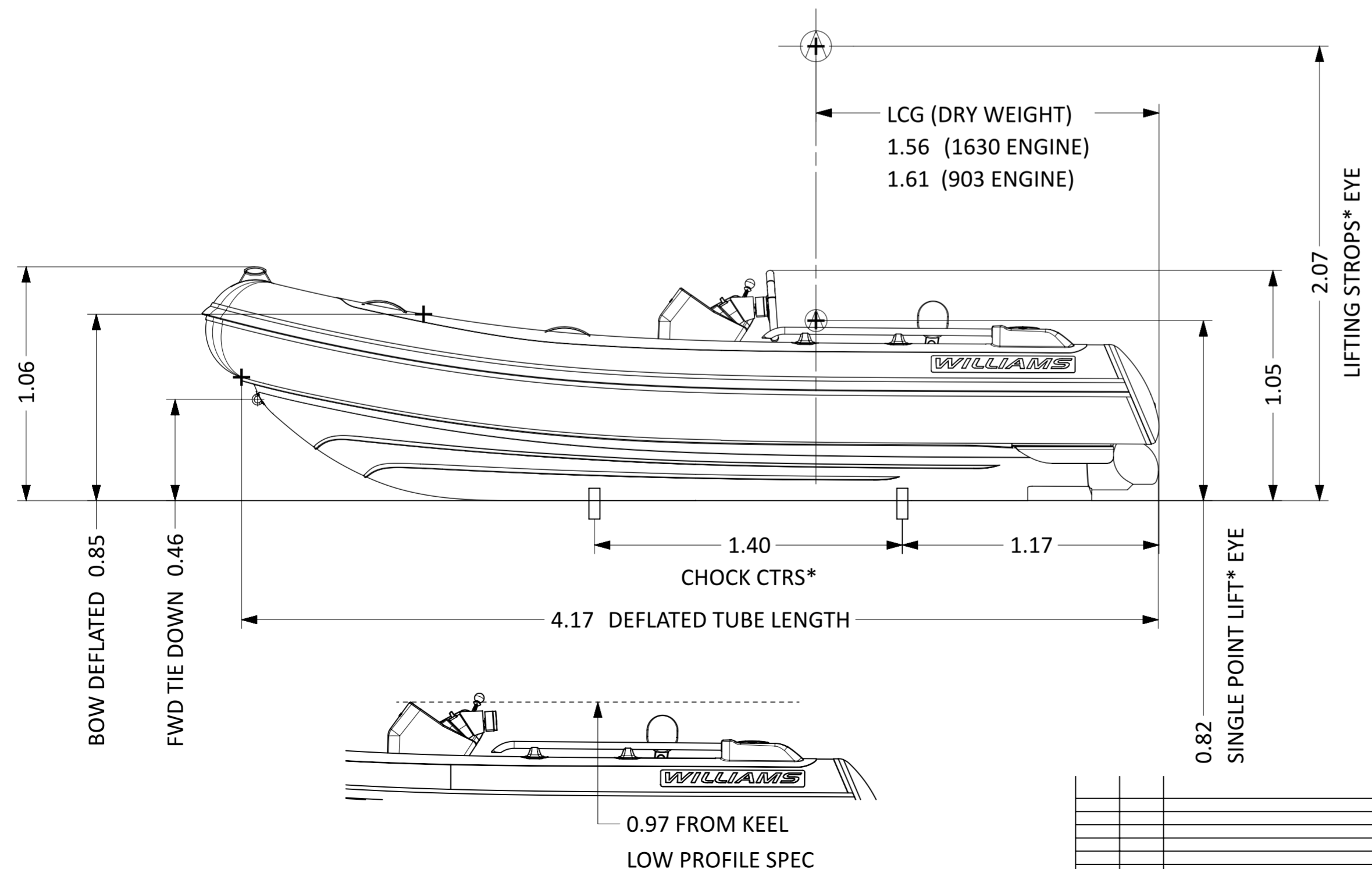
# SPORTJET 435

LENGTH O.A.	4.35m (±1%)
BEAM O.A.	1.94m (±1%)
DRAFT (FULLY LOADED)	0.36m
ENGINE	Rotax ACE 90 ECT/ 130 ECT
POWER	90/ 130hp ≅ 66.19/ 100 kW
DRY WEIGHT	446kg / 517kg (130ECT OPT)
SEATING CAPACITY	7 + 1 child
FUEL	PETROL
FUEL CAPACITY	60L
MAX. SPEED	40/ 50mph ≅ 64/ 80kph
No. TUBE COMPARTMENTS	5
CE DESIGN CATEGORY	C



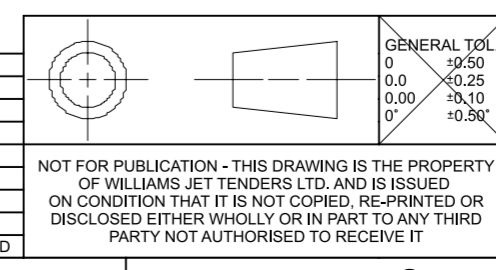
NOTES:

- LENGTH / BEAM TOLERANCE DUE TO VARIATION IN TUBE PRESSURE.
- AVERAGE DRY WEIGHT STATED; ACTUAL WEIGHT DEPENDENT ON OPTIONS FITTED.
- LOW PROFILE SPEC:  
-DEFLATE TUBES, (AUTO BOW TUBE INFLATOR OPTION REQUIRED\*).  
-REMOVE STEERING WHEEL, (QUICK RELEASE OPTION REQUIRED\*).
- STANDARD CHOCKS\*: 99-0405  
CHOCK PROFILES DRAWING: RD2131
- SINGLE POINT LIFT OPTION\*: 99-0987



\*OPTIONAL ACCESSORY

REV.	DATE	DETAILS	FZ	OBB
1	15/09/23	DOCUMENT PRODUCTION	FZ	OBB
			DRAWN	APPVD



NAME	DATE
DRAWN FZ	15/09/23
APPVD OBB	
PROJECT:	
INSPECTION LEVEL:	
MATERIAL & FINISH	

**WILLIAMS**

TITLE  
**SPORTJET 435 (2025MY)**

PART NO.  
WPT-000435SJ-2025MY-DATASHEET-dwg.1

SCALE 1:20

SHEET 1 OF 1