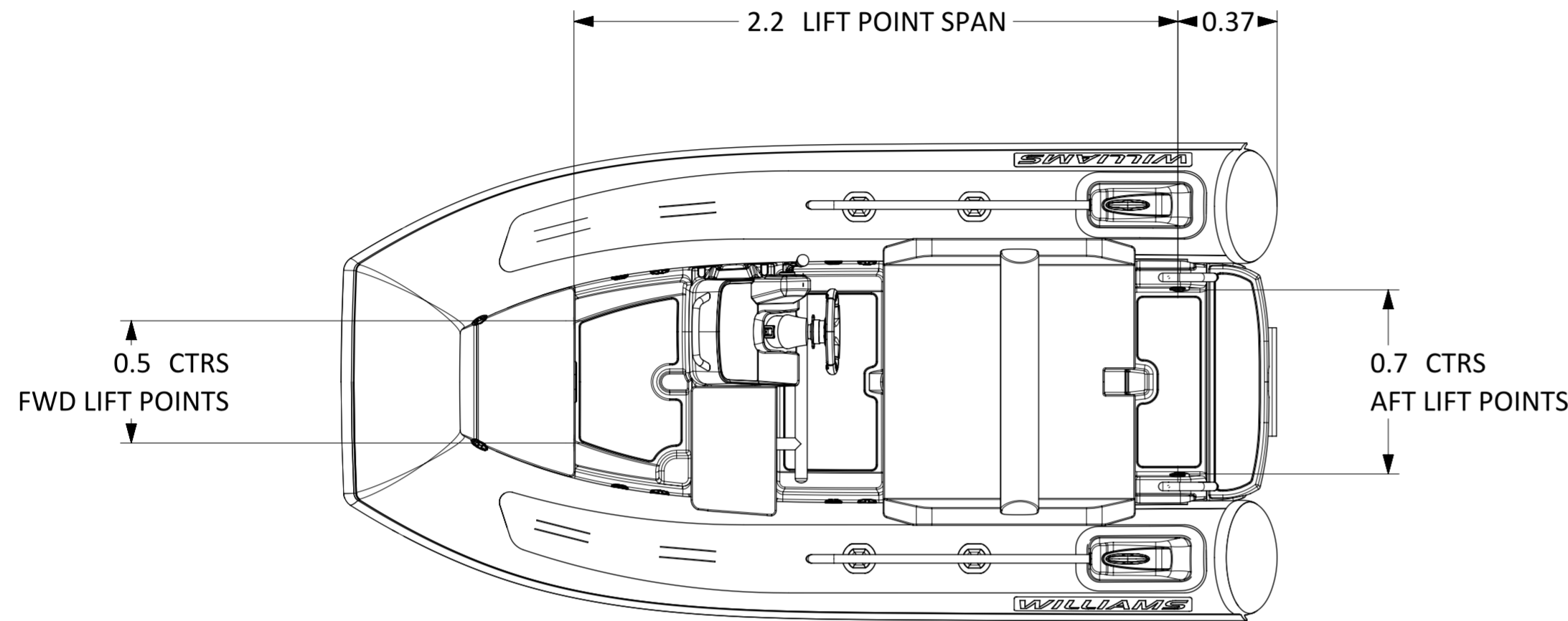


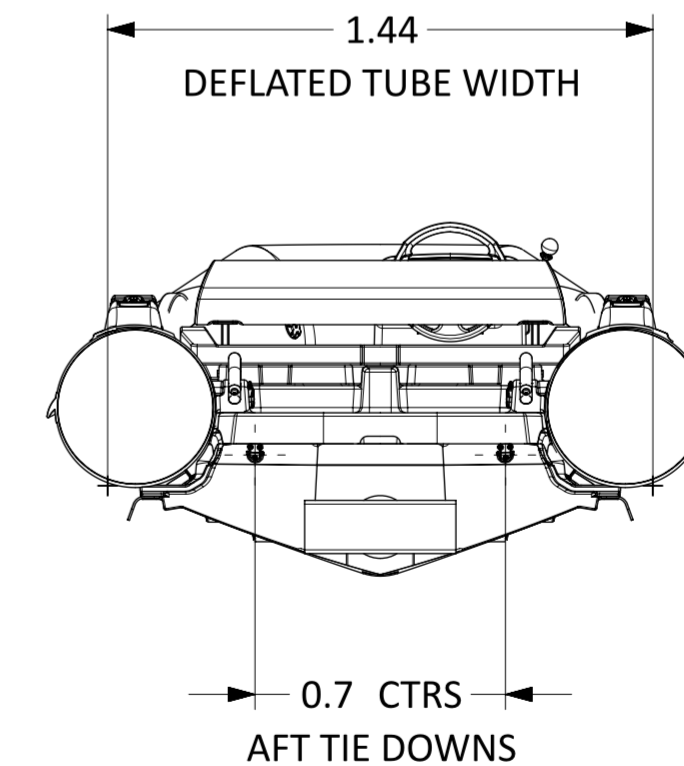
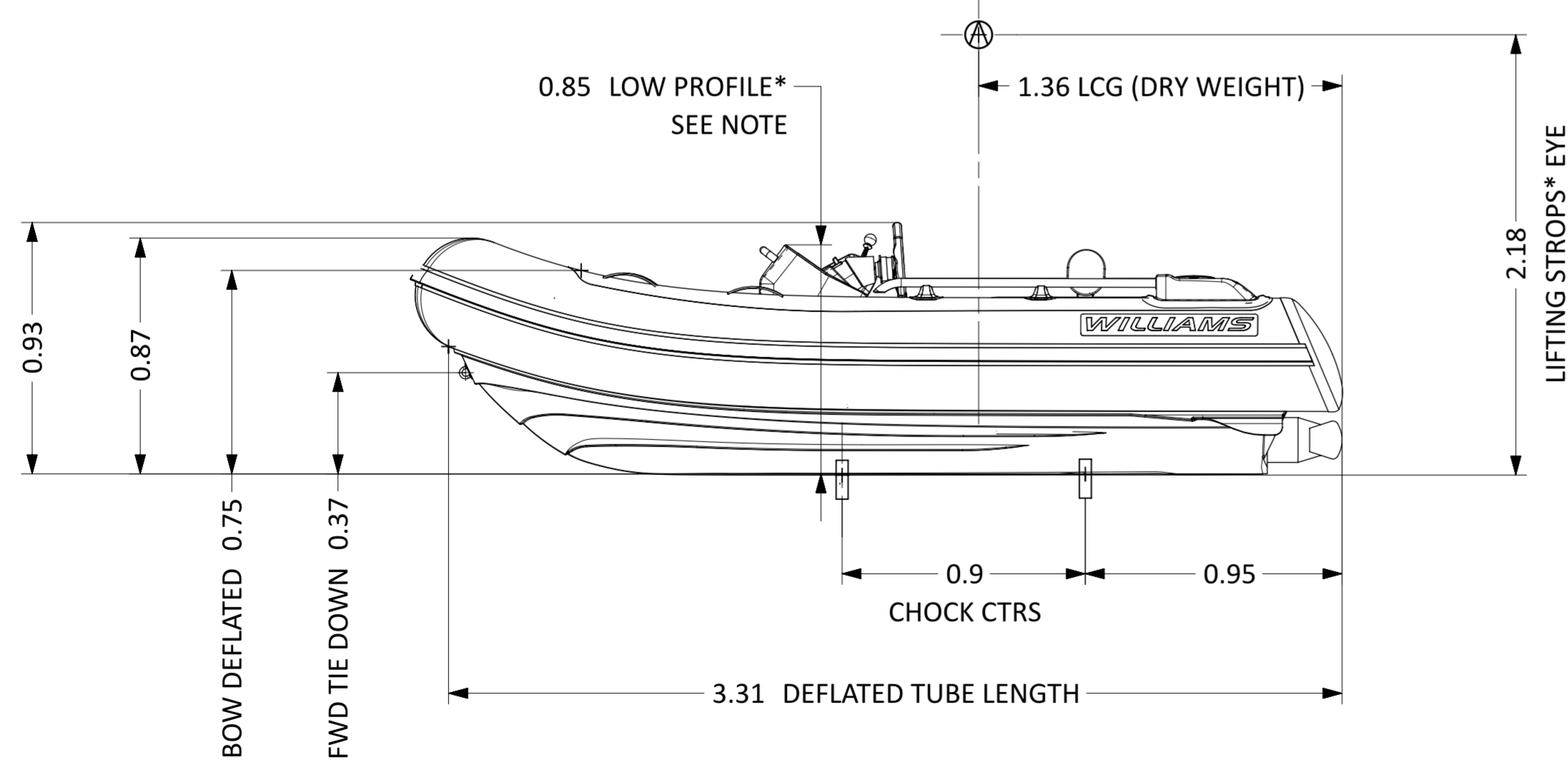
# SPORTJET 345

LENGTH O.A.	3.45m (#1%)
BEAM O.A.	1.77m (#1.5%)
DRAFT (FULLY LOADED)	0.33m
ENGINE	ROTAX 900 ACE
POWER	90hp ≈ 67kW
DRY WEIGHT	340Kg
SEATING CAPACITY	5
FUEL	PETROL
FUEL CAPACITY	50L
MAX. SPEED	46mph ≈ 74kph
No. TUBE COMPARTMENTS	5
CE DESIGN CATEGORY	C



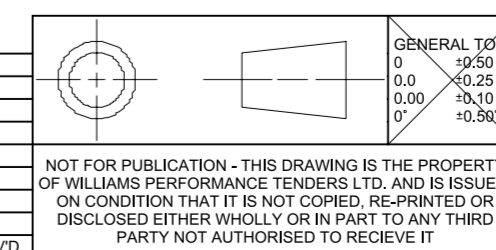
NOTES:

1. LENGTH / BEAM TOLERANCE DUE TO VARIATION IN TUBE PRESSURE.
2. AVERAGE DRY WEIGHT STATED; ACTUAL WEIGHT DEPENDENT ON OPTIONS FITTED.
3. LOW PROFILE SPEC:  
-DEFLATE TUBES  
-REMOVE STEERING WHEEL (QUICK RELEASE OPTION REQUIRED).
4. STANDARD CHOCKS\*: 99-0152  
CHOCK PROFILES DRAWING: RD1014



\* OPTIONAL ACCESSORY

REV.	DATE	DETAILS	GT	DBS
1	24/08/18	PRODUCTION RELEASE	GT	DBS



DRAWN	GT	DATE	24/08/2018
APPVD	DBS	DATE	24/08/2018
PROJECT:	-		
INSPECTION LEVEL:	-		
MATERIAL & FINISH	-		

<b>WILLIAMS</b>	
TITLE	
<b>SPORTJET 345 (2019MY)</b>	
PART NO.	WPT-000345SJ-2019MY-DATASHEET -dwg.1
SCALE	1:20
SHEET	1 OF 1

A

B

C

D

E