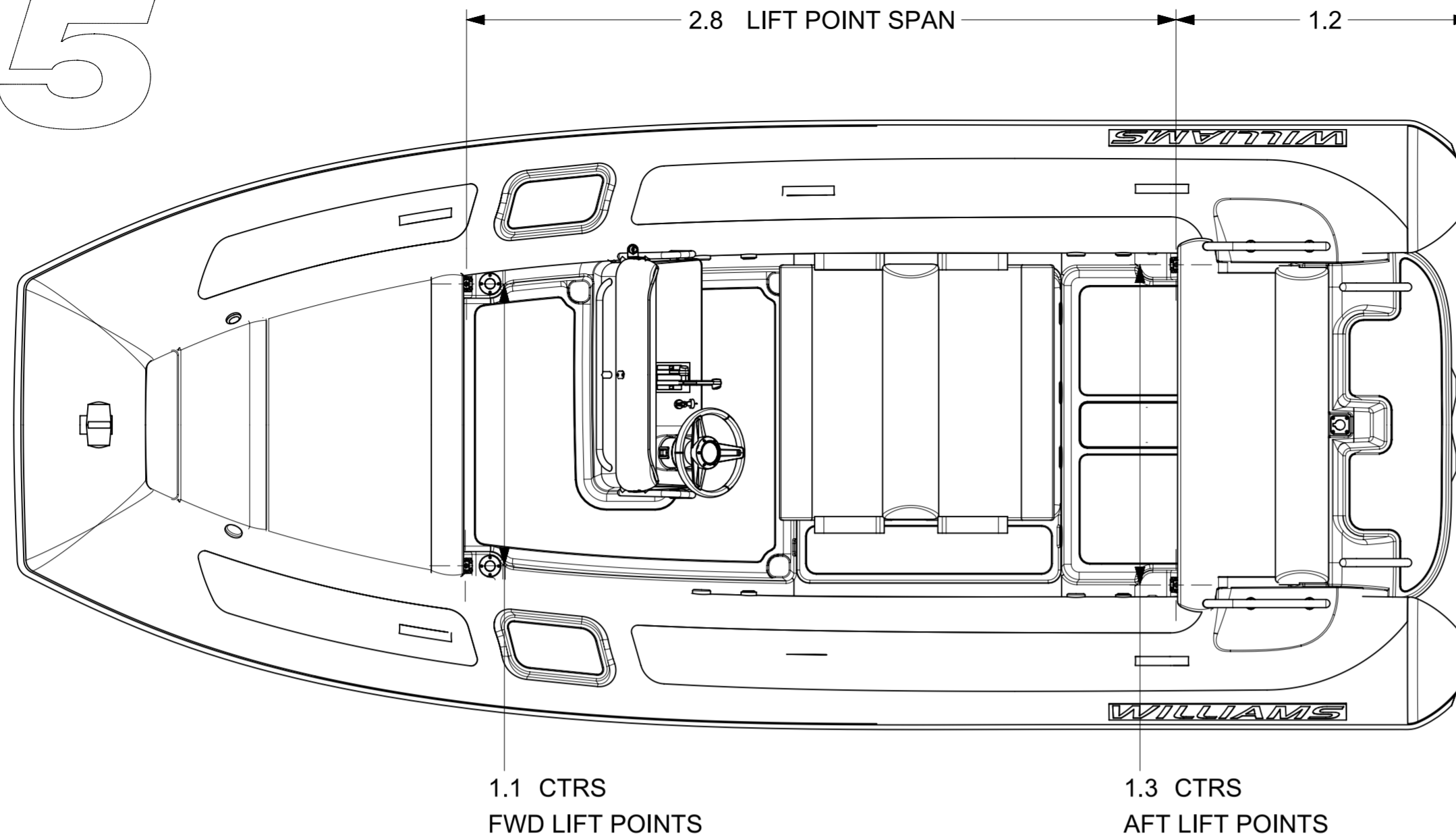


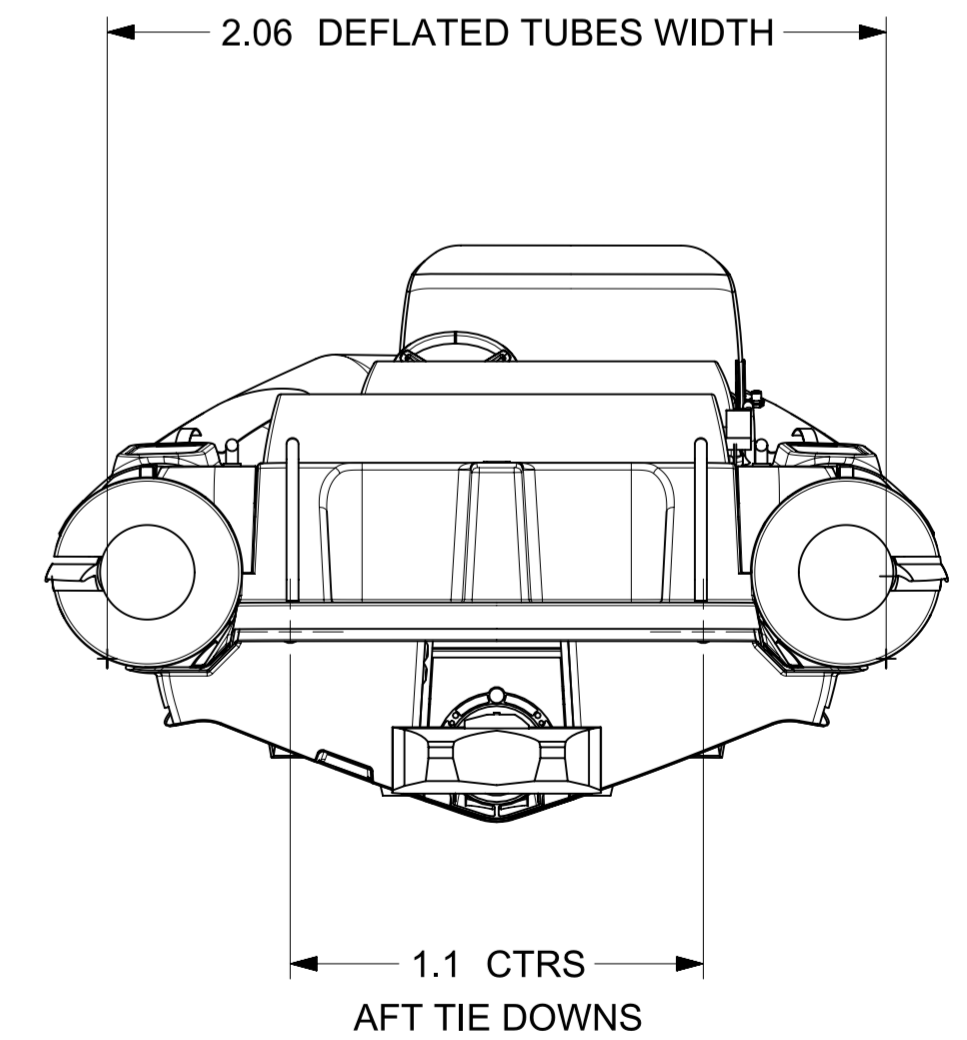
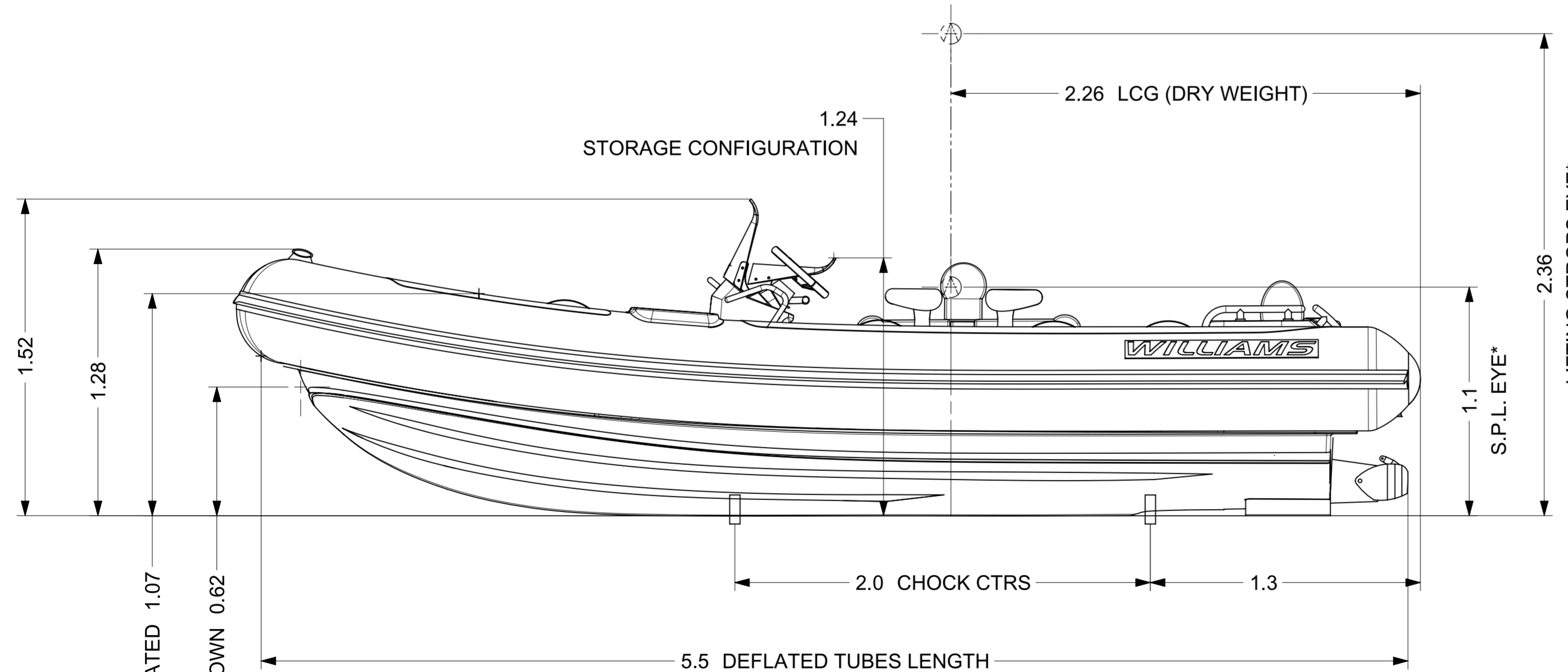
# DIESELJET 565



LENGTH	5.71m (±1%)
BEAM	2.39m (±1%)
DRAFT (FULLY LOADED)	0.50m
ENGINE	YANMAR 4LV
POWER	150hp ≅ 111kW / 195hp ≅ 143kW
DRY WEIGHT	1145Kg
SEATING CAPACITY	9
FUEL	DIESEL
FUEL CAPACITY	100L
MAX. SPEED	40mph ≅ 64kph / 44mph ≅ 71kph
No. TUBE COMPARTMENTS	6
CE DESIGN CATEGORY	C

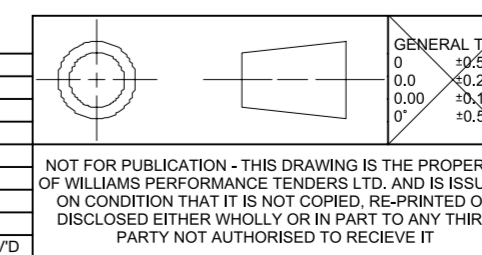
**NOTES:**

1. LENGTH / BEAM TOLERANCE DUE TO VARIATION IN TUBE AIR PRESSURE.
2. AVERAGE DRY WEIGHT STATED; ACTUAL WEIGHT DEPENDENT ON OPTIONS FITTED.
3. STORAGE CONFIGURATION:
  - QUICK RELEASE STEERING WHEEL\*
  - FOLDABLE WINDSCREEN
  - FWD TUBE DEFLATED
4. REFER TO DWG RD444 FOR CHOCK PROFILES.



\*OPTIONAL ACCESSORY

REV.	DATE	DETAILS	GT	DBS
1	29/08/18	PRODUCTION RELEASE	GT	DBS



DRAWN	GT	DATE	29/08/18
APPVD	DBS	DATE	29/08/18
PROJECT:	-		
INSPECTION LEVEL:	-		
MATERIAL & FINISH	-		

**WILLIAMS**

TITLE  
**DIESELJET 565 (2019MY)**

PART NO.  
WPT-000565DJ-2019MY-DATASHEET-dwg.1

SCALE 1:20

SHEET 1 OF 1