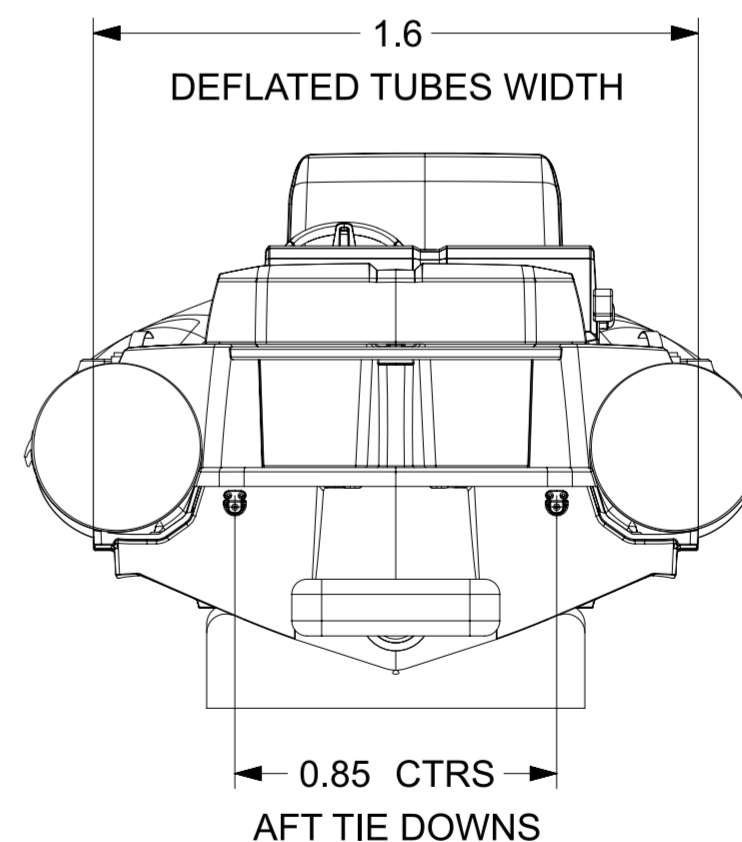
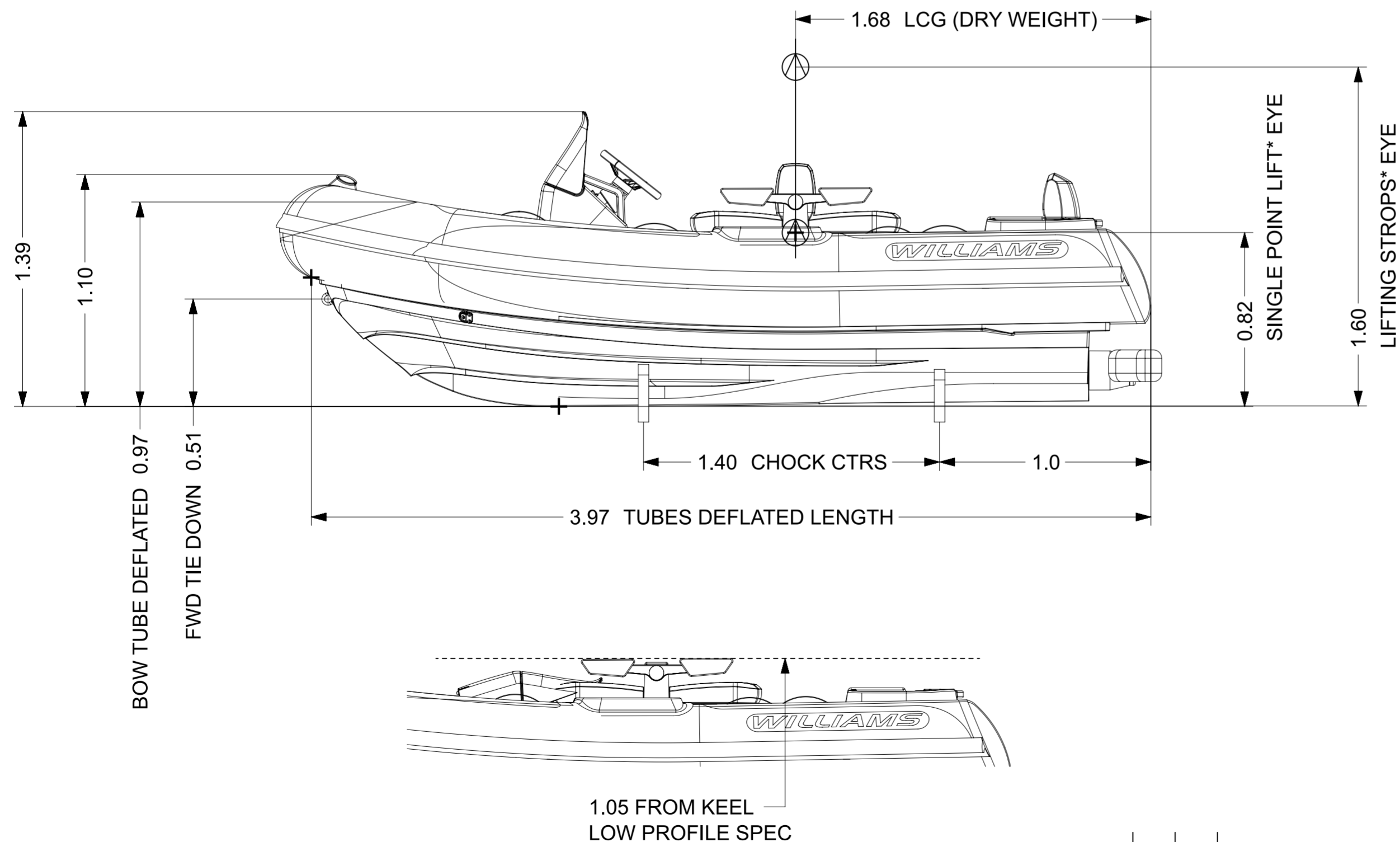
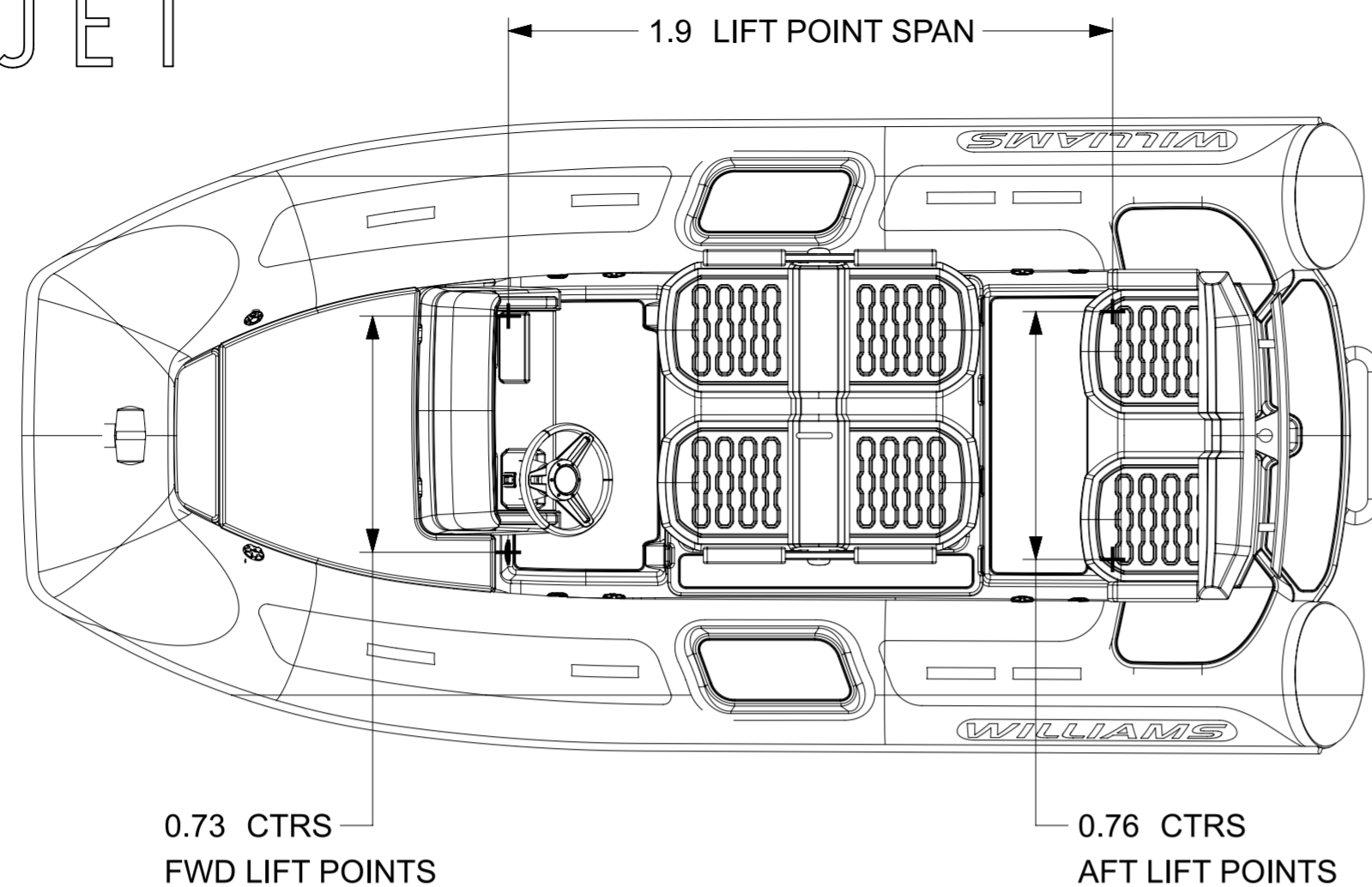


DIESELJET 415

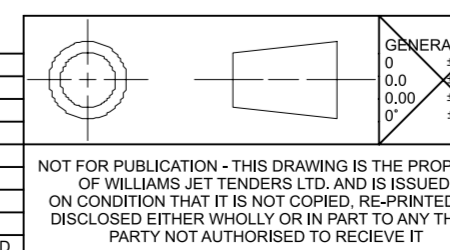


| | |
|-----------------------|----------------|
| LENGTH | 4.16m (±1%) |
| BEAM | 1.96m (±1%) |
| DRAFT (FULLY LOADED) | 0.57m |
| ENGINE | YANMAR 4JH-110 |
| POWER | 110hp ≅ 81kW |
| DRY WEIGHT | 828Kg |
| SEATING CAPACITY | 6 |
| FUEL | DIESEL |
| FUEL CAPACITY | 68L |
| MAX. SPEED | 36mph ≅ 58kph |
| No. TUBE COMPARTMENTS | 5 |
| CE DESIGN CATEGORY | C |

NOTES:

- LENGTH / BEAM TOLERANCE DUE TO VARIATION IN TUBE AIR PRESSURE.
- AVERAGE DRY WEIGHT STATED; ACTUAL WEIGHT DEPENDENT ON OPTIONS FITTED.
- GARAGE STOWAGE OPTION:
 - HELM FOLDED DOWN.
 - QUICK RELEASE STEERING WHEEL.
 - BOW TUBE DEFLATED. (AUTO BOW TUBE INFLATOR OPTION REQUIRED*)
- LOW PROFILE OPTION:
 - LP ENGINE COVER
 - ROMOVABLE BACKREST & ARMRESTS
- REFER TO DRAWING RD1772 FOR CHOCK PROFILES.
- SINGLE POINT LIFT OPTION*: 99-0506
- ALL DIMENSIONS IN METERS

| REV. | DATE | DETAILS | FZ | AM |
|------------|---------------------|---------|----|----|
| 18/10/2024 | PRODUCTION RELEASED | | FZ | AM |



| | | |
|-------------------|----|------------|
| DRAWN | FZ | 18/10/2024 |
| APPVD | AM | 18/10/2024 |
| PROJECT: | | |
| INSPECTION LEVEL: | | |
| MATERIAL & FINISH | | |

WILLIAMS

TITLE
DIESELJET 415 (2025MY)

PART NO.
WPT-000415DJ-2025MY-DATASHEET-dwg.1

SCALE 1:20

SHEET 1 OF 1

NOT FOR PUBLICATION - THIS DRAWING IS THE PROPERTY OF WILLIAMS JET TENDERS LTD. AND IS ISSUED ON CONDITION THAT IT IS NOT COPIED, RE-PRINTED OR DISCLOSED EITHER WHOLLY OR IN PART TO ANY THIRD PARTY NOT AUTHORISED TO RECEIVE IT

REMOVE ALL BURRS & BREAK SHARP EDGES
GENERAL SURFACE FINISH Ra 1.6UM UNLESS STATED
DO NOT SCALE DRAWING